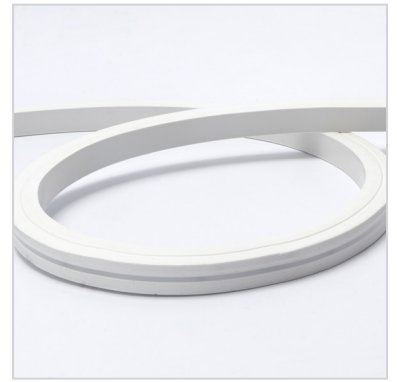




SKYLINE FLEX 1515 TB

Flexible neon strip – top bend

SKYLINE FLEX 1515 TB



Flexible, silicone-encapsulated LED system. Designed to bend along its vertical axis. Continuous and uniform light glow to imitate conventional neon tubes. IP67 protection level and IK08 impact rating. Efficacy rating up to 105 lm/w, L70 >50000 hours. 5 years warranty.

Base System:

Food-grade, flexible silicone extrusion. UV, flame, salt water and chlorine resistant. IP67 and IK08 rating.

Light Engine:

Flexible led module with multiple options of lumen output, CCT and CRI. Tunable White versions available.

Control Protocols:

Fixed output, DALI, Switch Dim, Casambi (pending LED driver configuration), DMX (pixel control).

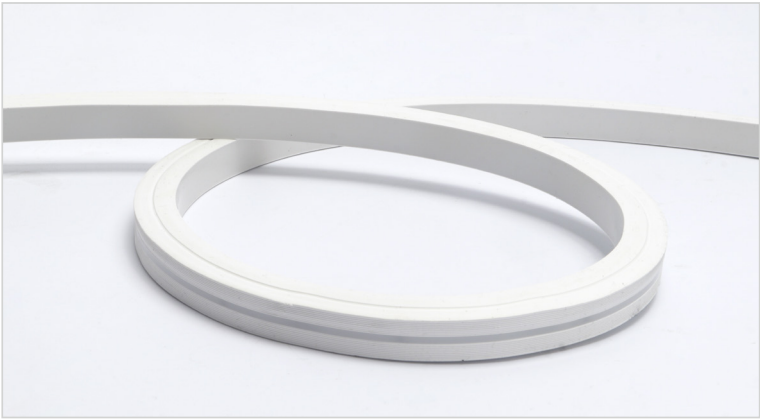
Optics:

Diffusive and transparent (clear) options.

Mounting Options:

Aluminium profiles, Aluminium clips, Quick installation with IP connectors.

IP 67**IK 08**



KEY ADVANTAGES

- High efficacy up to 105lm/w
- Food-grade silicone material, UV, flame, salt and chlorine resistant
- SELV 24 V operating voltage
- Diffused and clear option available
- Great flexibility, compact dimensions, easy installation

GENERAL INFORMATION	
Installation type	Surface Mounted with aluminium profile or aluminium clips
RCM Mark	Yes
Certifications	AS/NZS/IEC 60598, ROHS

HOUSING AND FINISH	
Housing	Food grade silicone extrusion, matt finish
End plates	Molded endplates
Light distribution	Direct
Optics	Clear or diffusive silicone
Tightness level	IP 67
Impact resistance	IK 08

PERFORMANCE	
Lumen package range (lm/m)	up to 1425lm/m
Power consumption range (W/m)	5 - 15

OPERATING CONDITIONS	
Operating temperature range (Ta)	-40°C up to +60°C

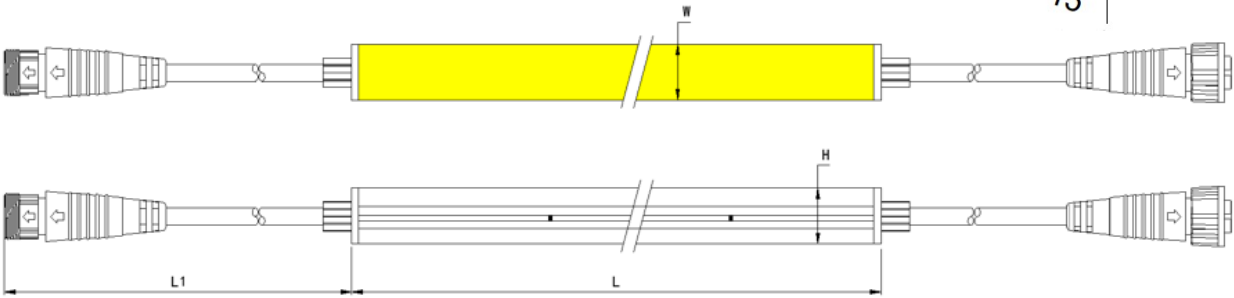
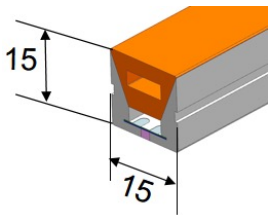
ELECTRICAL INFORMATION	
Electrical class	Class III
Nominal voltage	24 V DC
Control protocol(s)	Fixed Output, DALI, Switch Dim, Casambi (depends on the LED driver configuration)
Control options	Based on application and design architecture

OPTICAL INFORMATION	
LED colour temperature	Standard: 3000K, 4000K Optional: 2700K, 5000K, 6500K, Tuneable white 2700K-6500K
Colour rendering index (CRI)	>80 Optional: >90
Standard Deviation Colour Matching (SDCM)	3 MacAdam Steps

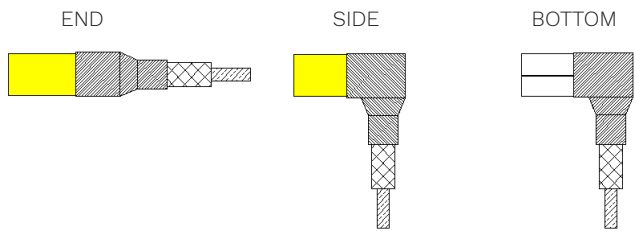
RATED LUMEN MAINTENANCE	
All configurations	L70>50,000h

DIMENSIONS

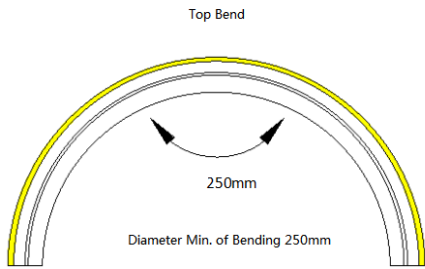
W x H (mm)	15 x 15
L (mm)	5000 (standard reel). Customised length available (1000-8000)
L1 (mm)	300



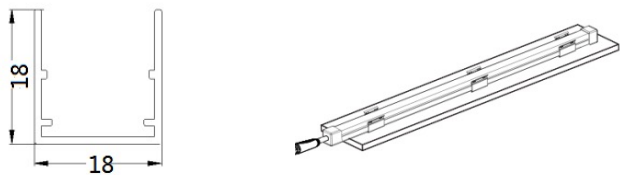
POWER ENTRY OPTIONS



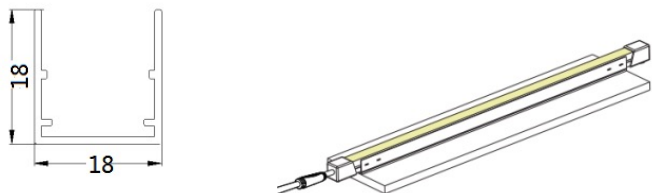
MOUNTING



ALUMINIUM CLIP



ALUMINIUM PROFILE



PERFORMANCE

PRODUCT	BEND	SIZE (mm)	OPTICS	POWER (W)	CCT (K)	CRI	Lm	Lm/W
SKYLINE FLEX	TOP BEND	1515	Diffused	5	4000	80	525	105
SKYLINE FLEX	TOP BEND	1515	Diffused	10	4000	80	1000	100
SKYLINE FLEX	TOP BEND	1515	Diffused	15	4000	80	1425	95
SKYLINE FLEX	TOP BEND	1515	Diffused	5	TW 2700-6500	80	450	90
SKYLINE FLEX	TOP BEND	1515	Diffused	10	TW 2700-6500	80	850	85
SKYLINE FLEX	TOP BEND	1515	Diffused	15	TW 2700-6500	80	1200	80
SKYLINE FLEX	TOP BEND	1515	CLEAR	5	4000	80	575	115
SKYLINE FLEX	TOP BEND	1515	CLEAR	10	4000	80	1100	110
SKYLINE FLEX	TOP BEND	1515	CLEAR	15	4000	80	1575	105

Note: The above output values are 'delivered' lumens. This takes into consideration the optical efficacy of the luminaire.
Above values are based on 4000K colour temperature and 25° C ambient temperature. Outputs for 1m length.

TO SPECIFY

Flexible, silicone-encapsulated LED system. Designed to bend along its vertical axis Continuous and uniform light glow to imitate conventional neon tubes. IP67 protection level and IK08 impact rating. Efficacy rating up to 105 lm/w, L70 >50000 hours. 5 years warranty