



SKYLINE FLEX D25

Flexible LED strip

SKYLINE FLEX D25



Flexible, silicone-encapsulated LED system. Continuous and uniform light glow to imitate conventional neon tubes. IP67 protection level and IK08 impact rating. Efficacy rating up to 80 lm/W, L70 >50000 hours. 5 year warranty.

IP 67

IK 08



Base System:

Food-grade, flexible silicone extrusion. UV, flame, salt water and chlorine resistant. IP67 and IK08 rating.

Light Engine:

Flexible led module with multiple options of lumen output, CCT and CRI. RGBW versions available.

Control Protocols:

Fixed output, DALI, Switch Dim, Casambi (pending LED driver configuration),

Optics:

Diffusive

Mounting Options:

Aluminium profiles, Aluminium clips, Quick installation with IP connectors.





KEY ADVANTAGES

- High efficacy up to 80lm/W
- Food-grade silicone material, UV, flame, salt and chlorine resistant
- SELV 24 V operating voltage
- Great flexibility, compact dimensions, easy installation

GENERAL INFORMATION

Installation type	Surface Mounted with aluminium profile or aluminium clips
RCM Mark	Yes
Certifications	AS/NZS/IEC 60598, ROHS

HOUSING AND FINISH

Housing	Food grade silicone extrusion, matt finish
End plates	Molded endplates
Light distribution	Direct
Optics	Clear or diffusive silicone
Tightness level	IP 67
Impact resistance	IK 08

PERFORMANCE

Lumen package range (lm/m)	up to 1200lm/m
Power consumption range (W/m)	15 - 20

OPERATING CONDITIONS

Operating temperature range (Ta)	-40°C up to +60°C
----------------------------------	-------------------

ELECTRICAL INFORMATION

Electrical class	Class III
Nominal voltage	24 V DC
Control protocol(s)	Fixed Output, DALI, Switch Dim, Casambi (depends on the LED driver configuration)
Control options	Based on application and design architecture

OPTICAL INFORMATION

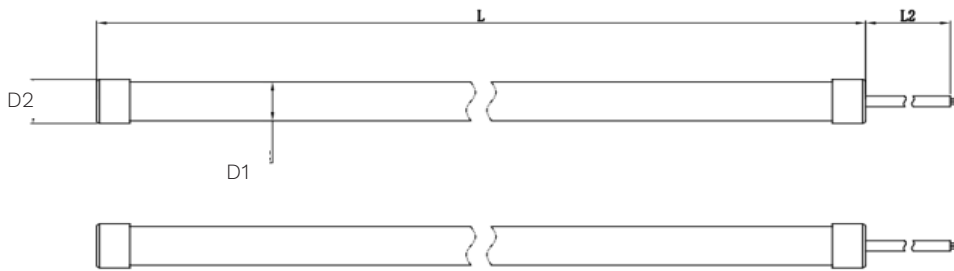
LED colour temperature	Standard: 3000K, 4000K Optional: 2700K, 5000K, 6500K, Tuneable white 2700K-6500K, RGBW
Colour rendering index (CRI)	>80 Optional: >90
Standard Deviation Colour Matching (SDCM)	3 MacAdam Steps

RATED LUMEN MAINTENANCE

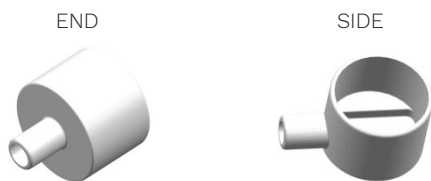
All configurations	L70>50,000h
--------------------	-------------

DIMENSIONS

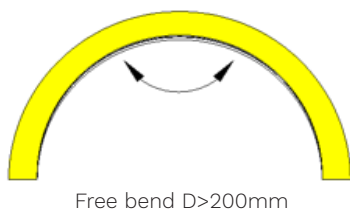
D1, D2	25, 27
L (mm)	5000 (standard reel). Customised length available (1000-5000)
L1 (mm)	300



POWER ENTRY OPTIONS

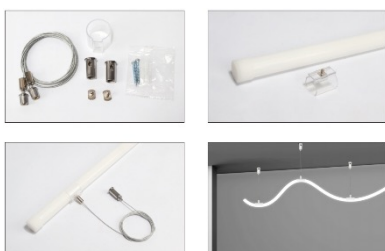


MOUNTING



MOUNTING OPTIONS

Suspension wires



Surface mount clips



Suspension rods



PERFORMANCE

PRODUCT	BEND	SIZE (mm)	OPTICS	POWER (W)	CCT (K)	CRI	Lm	Lm/W
SKYLINE FLEX	FREE BEND	D 25	Diffused	15	4000	80	1200	80
SKYLINE FLEX	FREE BEND	D 25	Diffused	20	RGBW	80	40	20

Note: The above output values are 'delivered' lumens. This takes into consideration the optical efficacy of the luminaire. Above values are based on 4000K colour temperature and 25° C ambient temperature. Outputs for 1m length.

TO SPECIFY

Flexible, silicone-encapsulated LED system. Continuous and uniform light glow to imitate conventional neon tubes. IP67 protection level and IK08 impact rating. Efficacy rating up to 85/W, L70 >50000 hours. 5 year warranty.