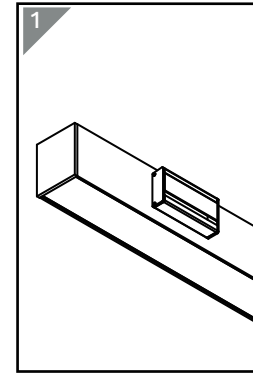
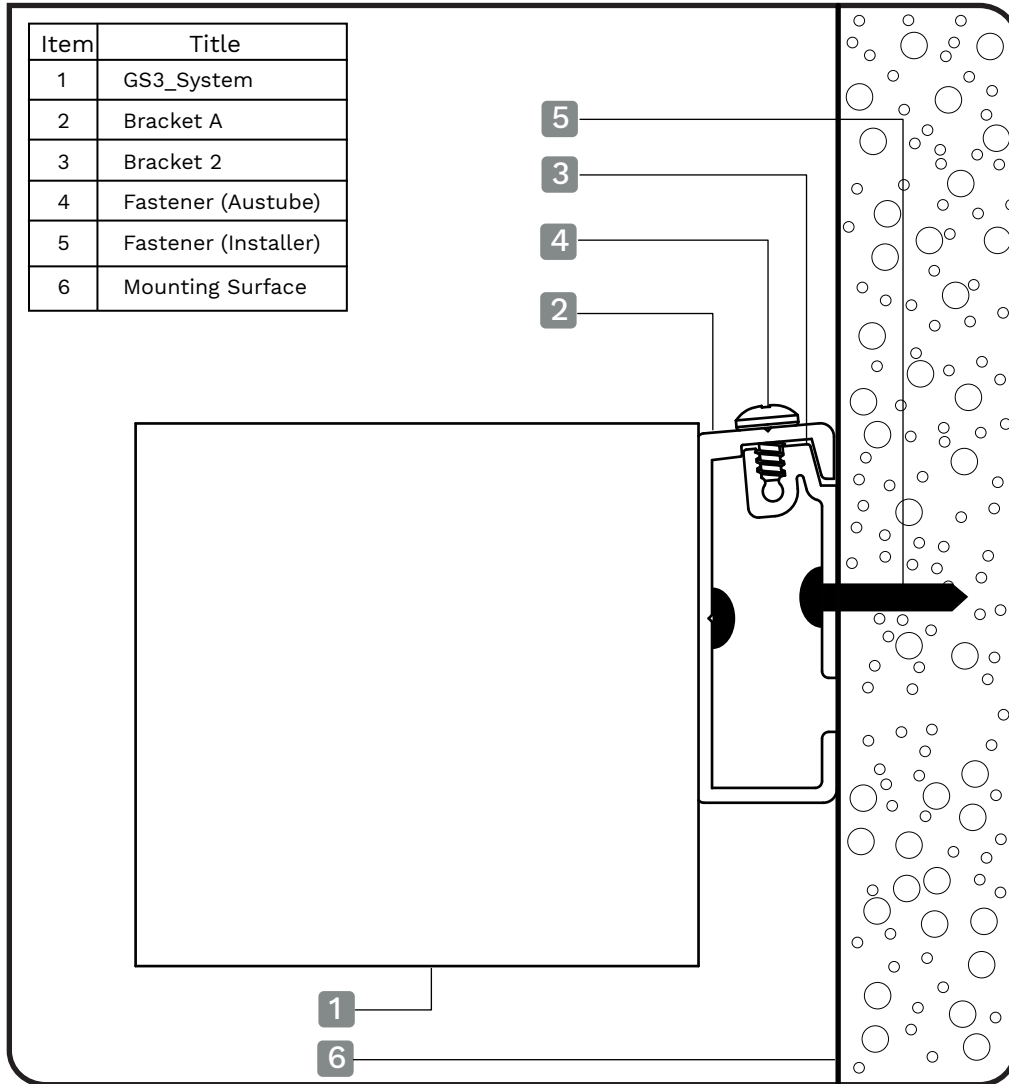
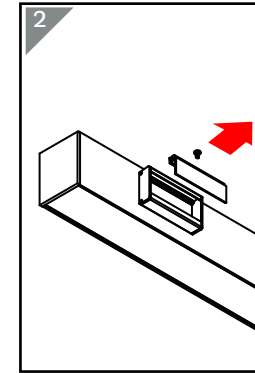


# GS3 - Wall Mount Installation Instruction

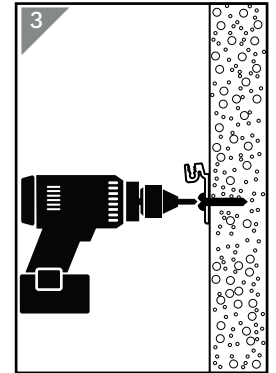


Ensure unit is safe and secured before proceeding

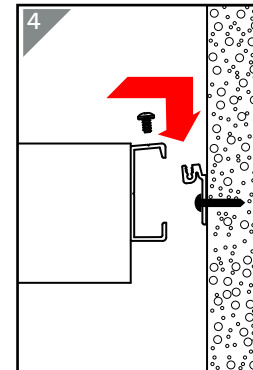
Note: Make sure power is disconnected



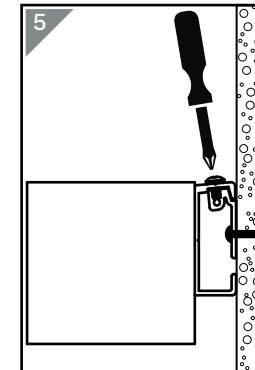
Remove securing fastener to remove Bracket B



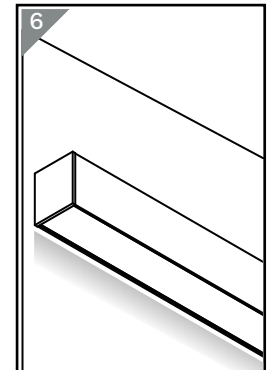
Secure Bracket B to mounting surface (fastener provide by installer)



Position Luminaire Bracket A over Bracket B as shown



Fasten securing fastener



Make sure system is safe and secured to complete

Important note: Install/service by licensed/authorised installer only.